

## LakeErieWX

Weather Forecasting Resources for the North Coast

# Great Lakes Basic Marine Weather Seminar

## Saturday February 4, 2012

### Overview

Learn a little meteorology and reduce some of the uncertainty of boating on the Great Lakes. An enhanced understanding of basic weather principles and a few simple forecasting skills can improve cruise planning, racing performance and reduce the likelihood of being exposed to uncomfortable or hazardous weather conditions.

The Basic Marine Weather Seminar will provide attendees with an understanding of basic meteorological principles and explore the conditions favoring the development of severe weather. Graphics and case studies of actual Lake Erie weather events will be used to focus on the interesting and unique forecasting challenges associated with the Great Lakes. Attendees will also develop a basic daily forecasting resource kit based upon readily available government and university websites.

Location: **Lorain Sailing & Yacht Club**  
108 Alabama Avenue  
Lorain, OH 44052

When: **February 4, 2012**  
8:00 am to 4:30 pm

Fee: \$30 per person  
(Fee includes breaks & lunch)

#### Registration and Additional Information

Contact: **Lynn Ensinger-LSYC**

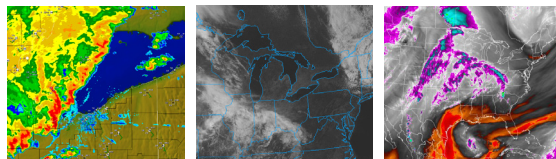
Email: [Bluemoon394@hotmail.com](mailto:Bluemoon394@hotmail.com)

Seminar Website:

<http://www.lakeeriewx.com/Seminars/LSYC/LSYC.html>

### Seminar Outline

- Section One: Introduction
- Section Two: A Solid Foundation (Basic Meteorological Principles)
- Section Three: Interpreting Weather Graphics
- Section Four: The Invisible Forces Controlling the Wind
- Section Five: Clouds And Precipitation
- Section Six: Dissecting A Low Pressure System
- Section Seven: Observational Tools (Radar & Satellite Imagery)
- Section Eight: Thunderstorms
- Section Nine: Waves
- Section Ten: A Daily Forecast Routine
- Section Eleven: On-board Resources  
(Monitoring The Weather After You Leave The Dock)



*Online Forecasting Tools*  
*Basic Marine Forecasting Seminars*  
*Presentations*  
*Regatta Weather Support*  
*Case Study/Event Summaries*