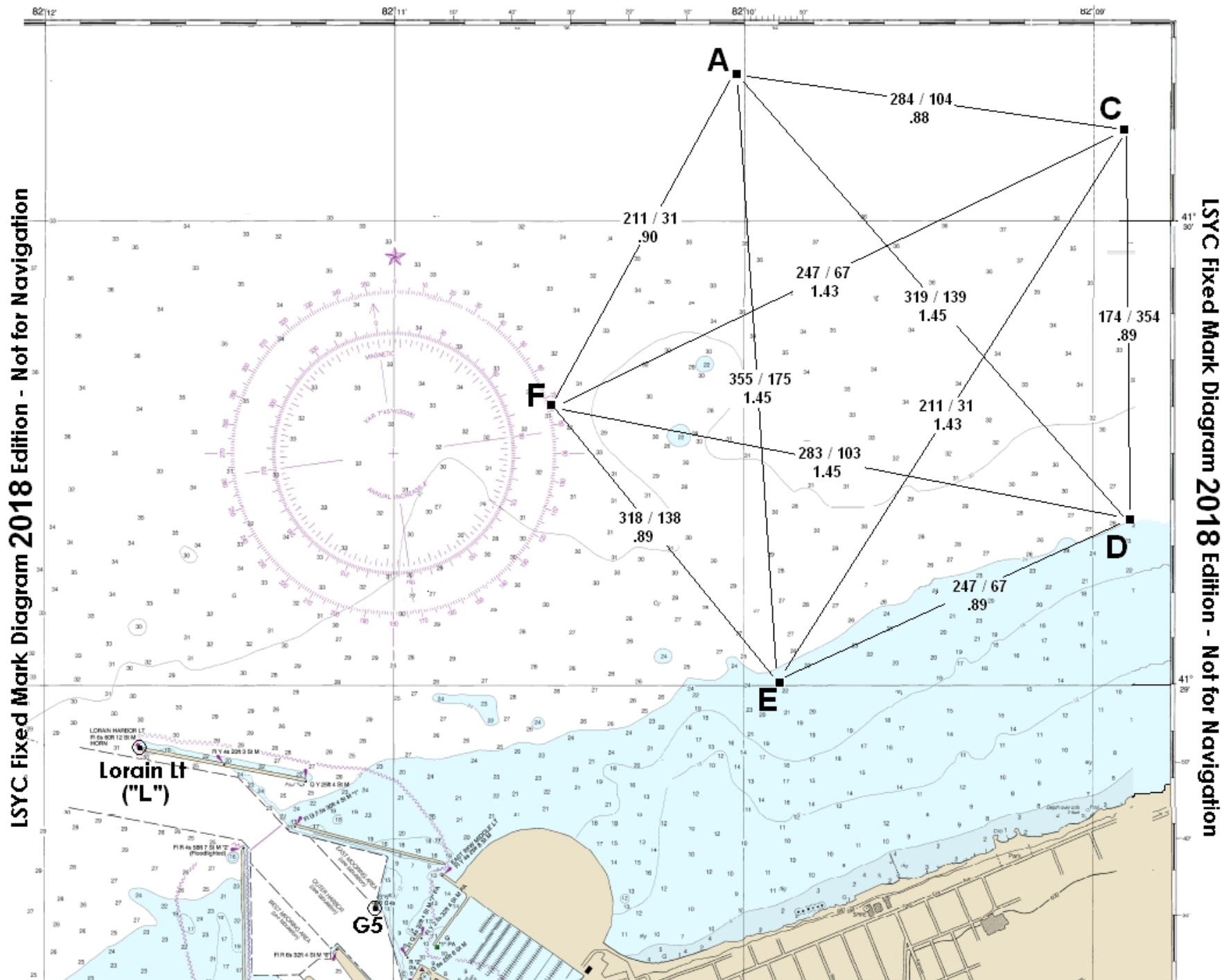


LSYC Fixed Mark Diagram - 2018 Edition - Not for Navigation



LSYC Fixed Mark Diagram 2018 Edition - Not for Navigation

LSYC Fixed Mark Diagram 2018 Edition - Not for Navigation

2018 LSYC Fixed Mark Course - Magnetic

Course and Distance - Read From Left to Right/Top

Marks	A	C	D	E	F	LorainLt	G5
D-M.d	41-30.45	41-30.23	41-29.35	41-29.01	41-29.68	41-28.86	41-28.52
D-M.d	82-10.06	82-08.92	82.08.80	82-09.90	82-10.68	82-11.72	82-11.07
A		111 0.88	146 1.45	182 1.45	218 0.9	225 2.01	
C	291 0.88		181 0.89	218 1.43	254 1.43	244 2.5	
D	326 1.45	361 0.89		74 0.89	110 1.45	264 2.24	
E	362 1.45	38 1.43	254 0.89		145 0.89	271 1.37	
F	38 0.9	74 1.43	290 1.45	325 0.89		230 1.12	
LorainLt	45 2.01	64 2.5	84 2.24	91 1.37	50 1.12		131 0.59
G5						311 0.59	
D-M-S	41-30-27	41-30-14	41-29-21	41-29-1	41-29-41	41-28-52	41-28-31
D-M-S	82-10-4	82-08-55	82.08-48	82-09-54	82-10-41	82-11-43	82-11-4

VHF Channel: 72

Time Limits

- First boat in class must reach first mark within one (1) hours
- First boat in class must finish the course within two (2) hours
- Race Committee may elect to Ignore the time limit by shortening course

PHRF Course Designation

- Course pattern is designated by mark letters displayed by RC. May be announced on VHF.
- "L" is the Lorain Light; "R" is the start/finish pin (left-side of line when looking toward first mark)

Start/Finish Line

- The Start and/or Finish line may be:
 - Between fixed mark and RC Boat
 - Between buoy with flag and RC Boat
 - Between fixed mark and buoy with flag (if no RC boat)
 - Between harbor "G5" and RC Boat (Harbor Start/Finish if RC Boat present)
 - Between harbor "G5" and red "6" light at river mouth (Harbor Start/Finish if no RC boat)
- If the RC boat was part of line at start but then departs, use "Harbor Finish" to finish race
- If no RC boat present at finish, record own time as "hh:mm:ss" using GPS/Cell source

Harbor Start/Finish Line

- Between green "5" buoy (G5) and RC Boat (if RC boat present)
- Between green "5" buoy (G5) and red "6" tower (if RC boat absent – record own finish time)
- Leave/enter Harbor between Lorain Light and old Lighthouse
- NEVER pass through harbor entrances not bounded by Lorain Light and old Lighthouse

Sunday PHRF Series Start/Finish

- Sunday Start line is on Star Fleet course then follow Fixed Mark course letters displayed
- Sunday Finish line is a "Harbor Finish" – record own finish with GPS/Cell source as "hh:mm:ss"

Start Patterns

- "Five Minute Start" - see Racing Rules of Sailing – Rule 26 – (horns and flags)
- "Three Minute Start" - (horns only) 3 at 3 min; 2 at 2 min; 1 at 1 min; Prolong Horn at Start